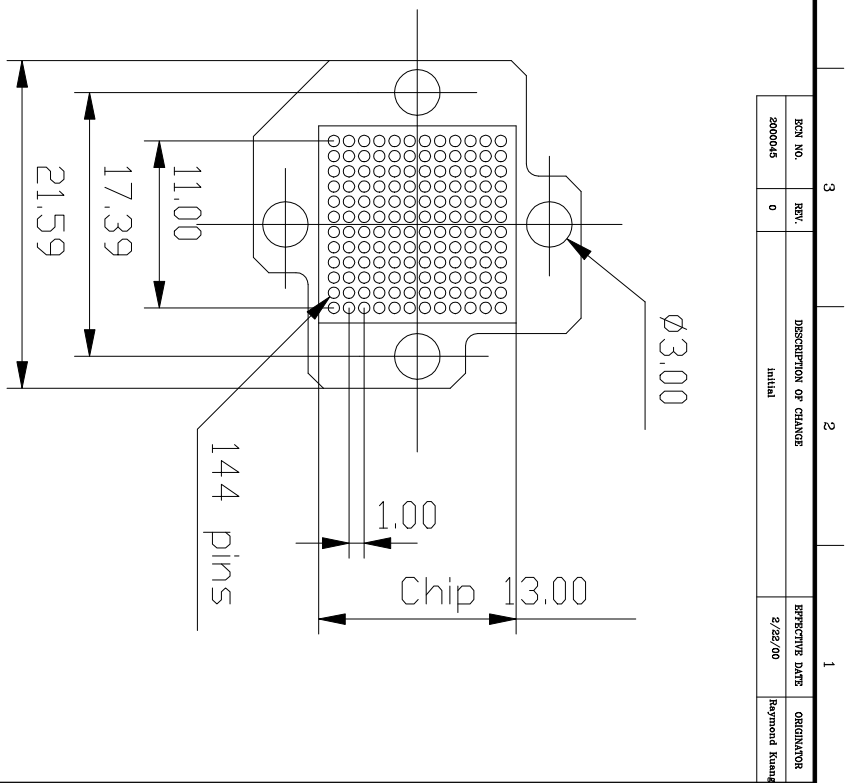
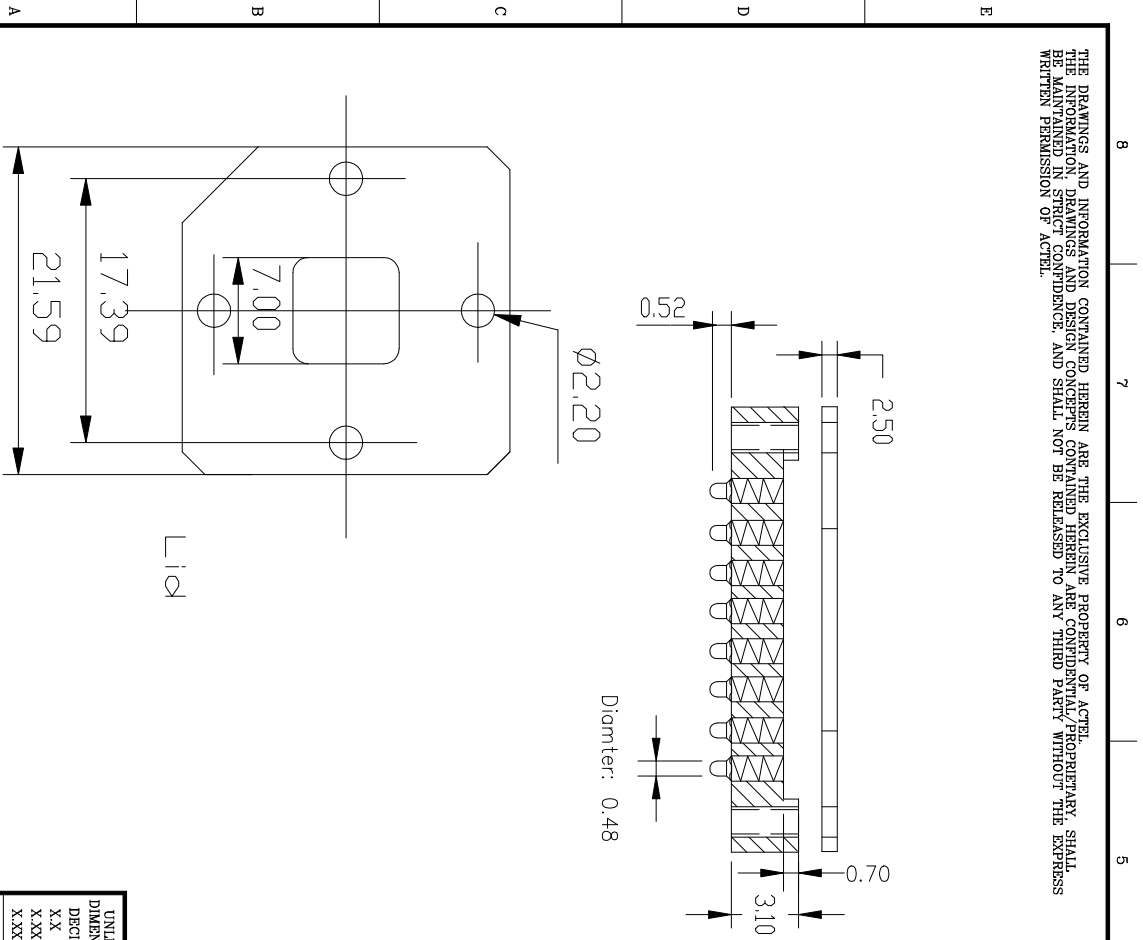


THE DRAWINGS AND INFORMATION CONTAINED HEREIN ARE THE EXCLUSIVE PROPERTY OF ACTEL. THE INFORMATION, DRAWINGS AND DESIGN CONCEPTS CONTAINED HEREIN ARE CONFIDENTIAL/PROPRIETARY, SHALL BE MAINTAINED IN STRICT CONFIDENCE, AND SHALL NOT BE RELEASED TO ANY THIRD PARTY WITHOUT THE EXPRESS WRITTEN PERMISSION OF ACTEL.



E-TEC PATENTS PENDING

REV.	DESCRIPTION OF CHANGE	DATE	ORIGINATOR
0	Initial	2/22/00	Raymond Kwang

UNLESS OTHERWISE SPECIFIED
DIMENSIONS ARE IN MILLIMETERS
DECIMAL
X.X ±0.10
X.XX ±0.05
X.XXX ±0.03

SEE NOTES

FINISH

DO NOT SCALE DRAWING

PRODUCTION	APPROVALS	DATE
DRAWN	Ray Kwang	2/2/2000
CHECKED		
RELEASED		

TITLE		ACTEL CORP	
144-13x13mm, 1.00mm E-TEC FBGA SOCKET		955 E ARQUES AVE	
SUNNYVALE CA 94086		TITLE	
SIZE	B	VENDOR NAME	E-TEC
VENDOR SUFFIX NUMBER	BPV14-1030-12A401	ACTEL DWG. NUMBER	1-07-09140
ACTEL PART#	SC-75144	VENDOR DWG. NUMBER	
SCALE	NONE	REV	0

ACTEL CONFIDENTIAL